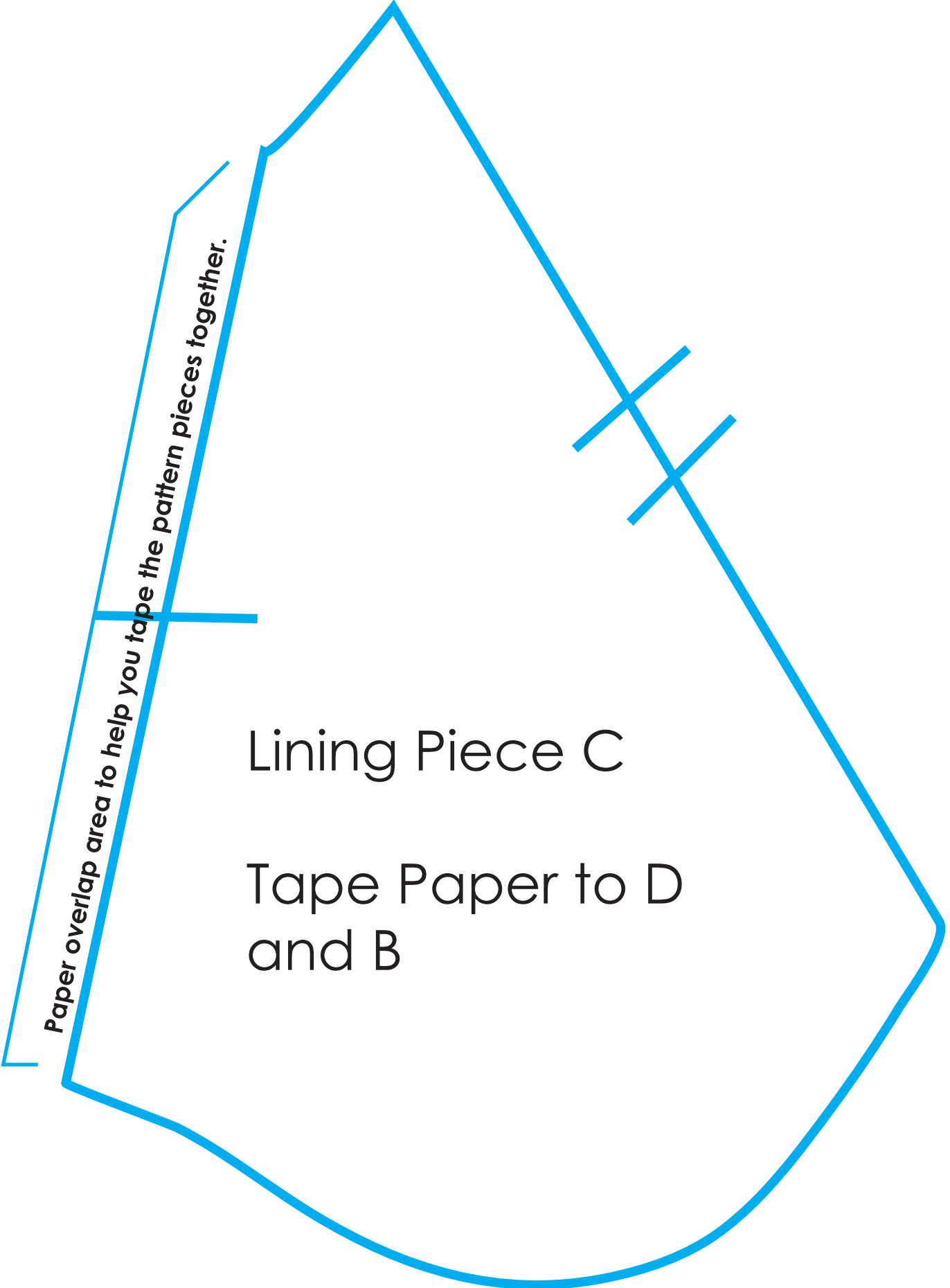


Lining Piece D

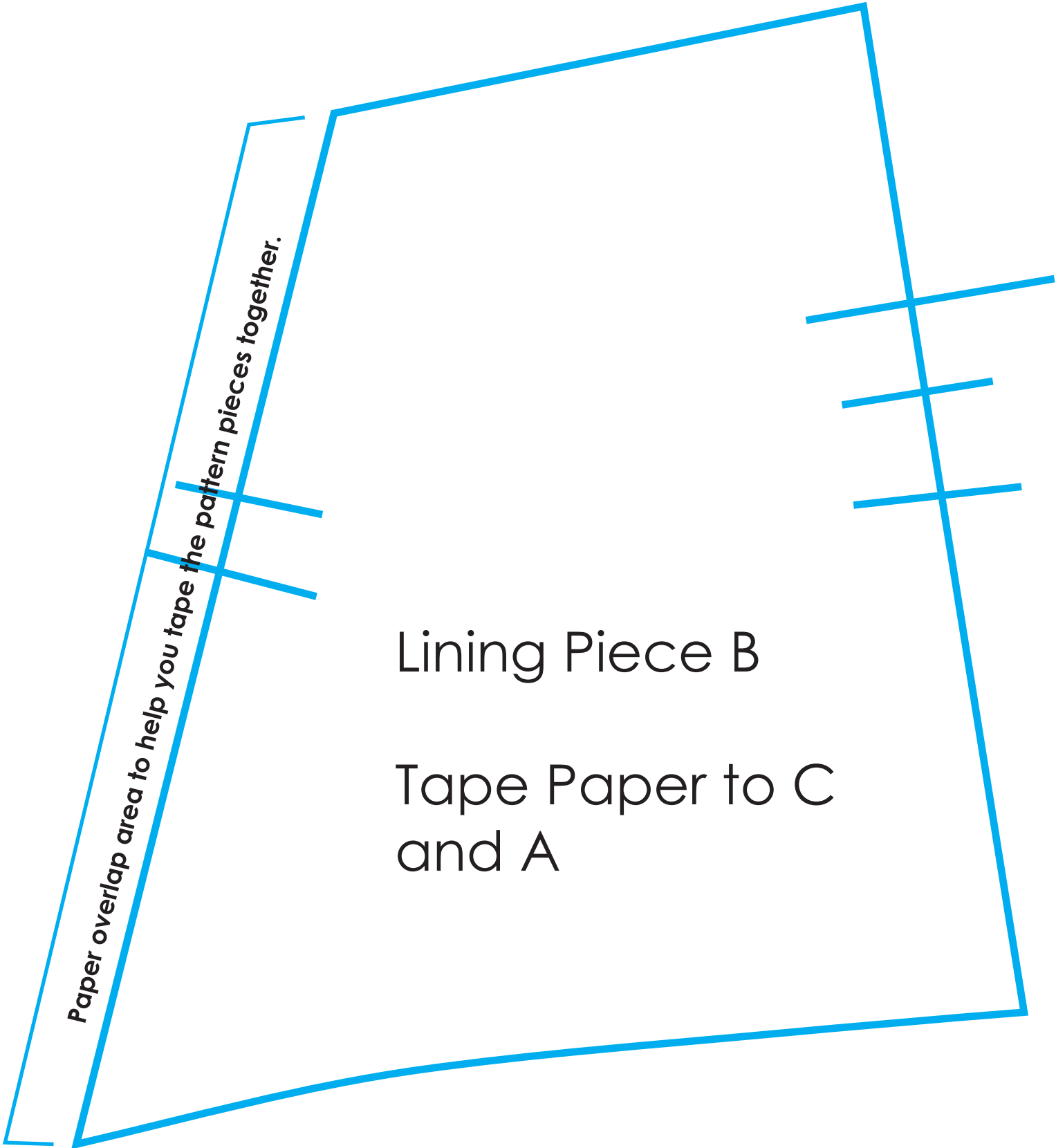
Tape Paper to C



*Paper overlap area to help you tape the pattern pieces together.*

Lining Piece C

Tape Paper to D  
and B



*Paper overlap area to help you tape the pattern pieces together.*

Lining Piece B

Tape Paper to C  
and A



Paper overlap area to help you tape the pattern pieces together.

Lining Piece A

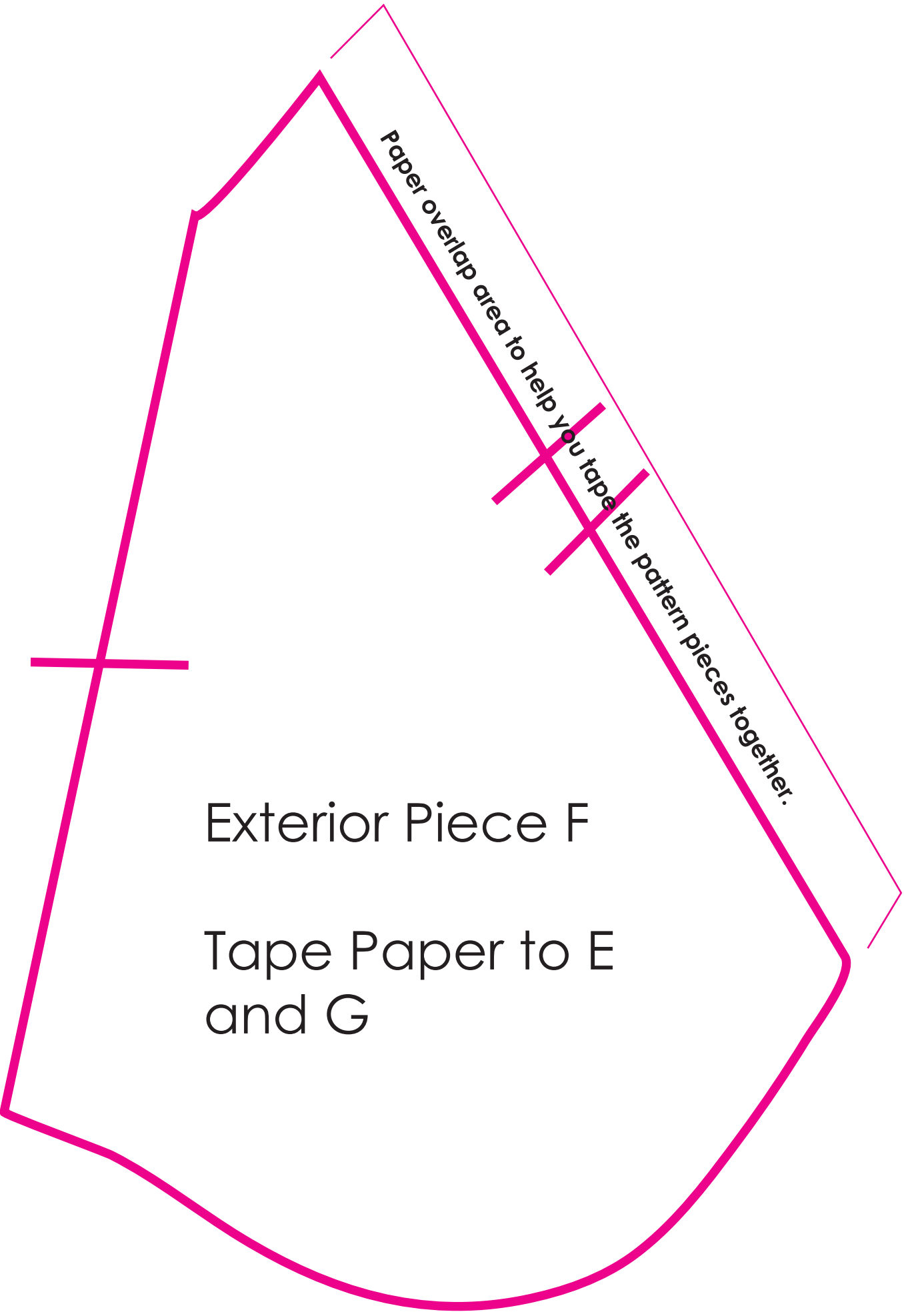
Tape Paper to B



Exterior Piece E

Tape Paper to F

*Paper overlap area to help you tape the pattern pieces together.*

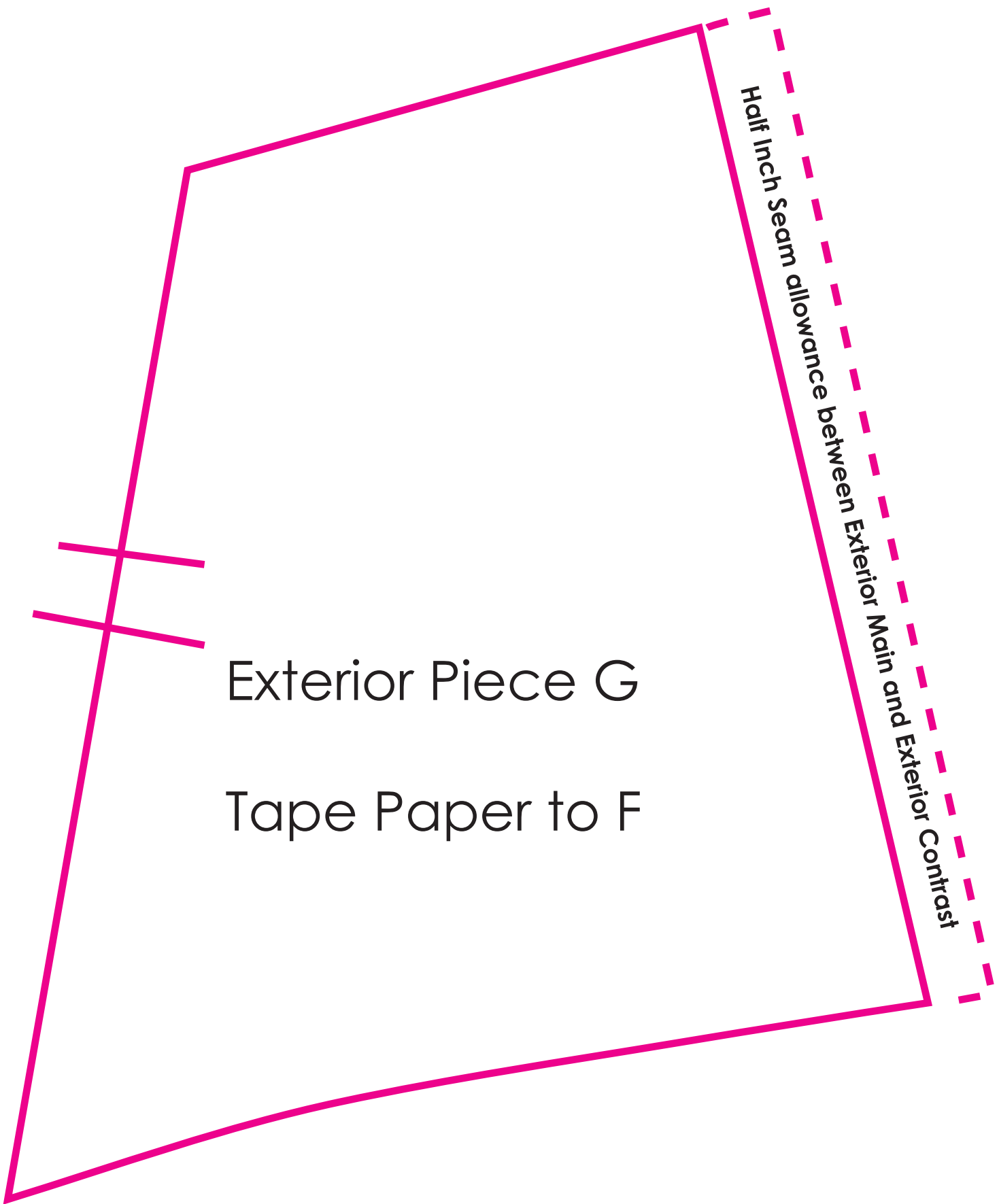


Paper overlap area to help you tape the pattern pieces together.

The diagram shows a pink outline of a pattern piece labeled 'Exterior Piece F'. It has a complex shape with a pointed top and a curved bottom. A horizontal pink line is drawn across the left side. A diagonal pink line runs from the top right towards the bottom right. Two short pink lines cross this diagonal line. A thin pink line extends from the top vertex of the piece, forming a small triangle with the diagonal line. The text 'Paper overlap area to help you tape the pattern pieces together.' is written along this thin line. Inside the main shape, the text 'Exterior Piece F' and 'Tape Paper to E and G' is present.

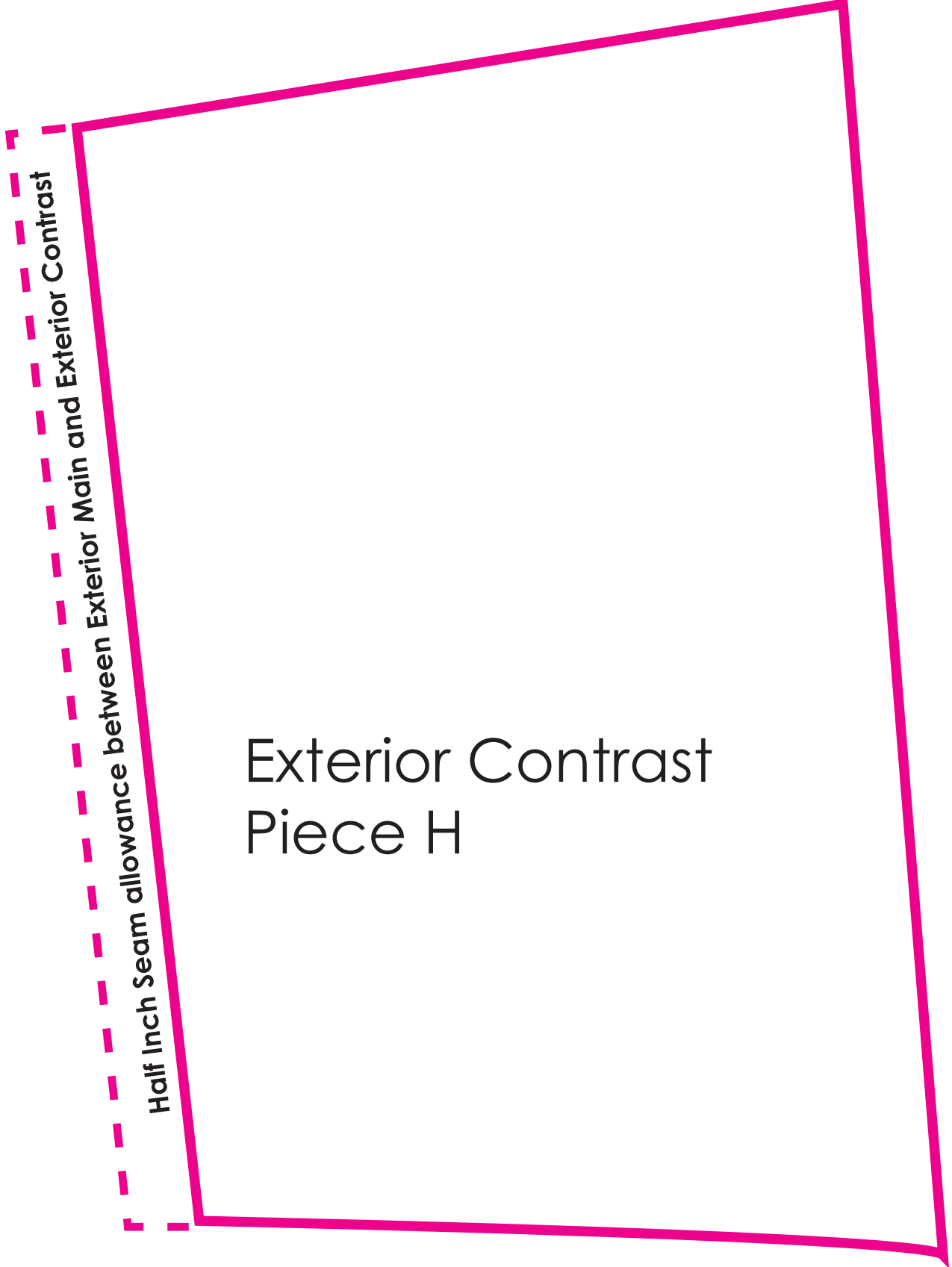
Exterior Piece F

Tape Paper to E  
and G



Half Inch Seam allowance between Exterior Main and Exterior Contrast

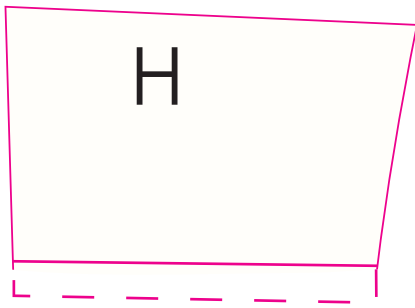
Exterior Piece G  
Tape Paper to F



Half Inch Seam allowance between Exterior Main and Exterior Contrast

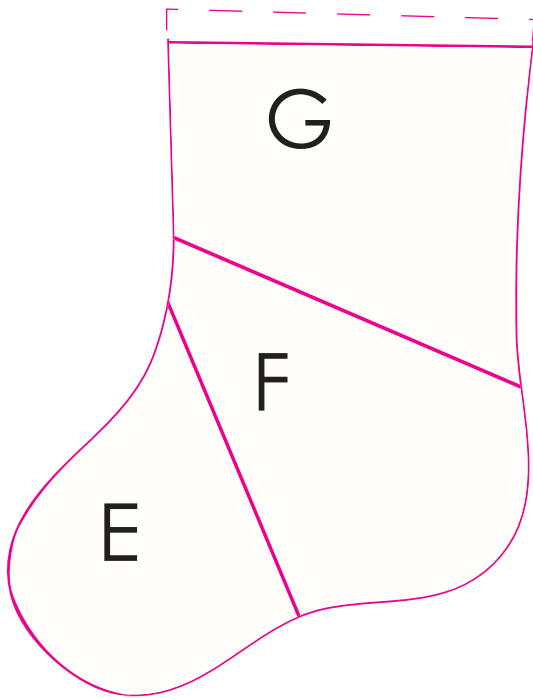
Exterior Contrast  
Piece H





### Exterior Contrast

- Cut out paper pattern around outer most edges, including dashed lines.
- Fold fabric in half wrong sides together.
- Cut two at a time around the outer most edges including the dashed line for the seam.

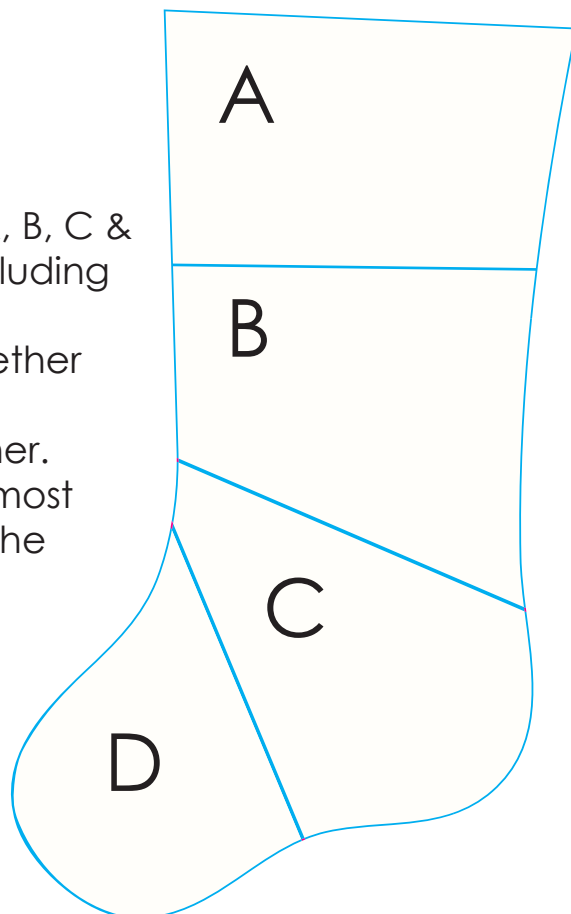


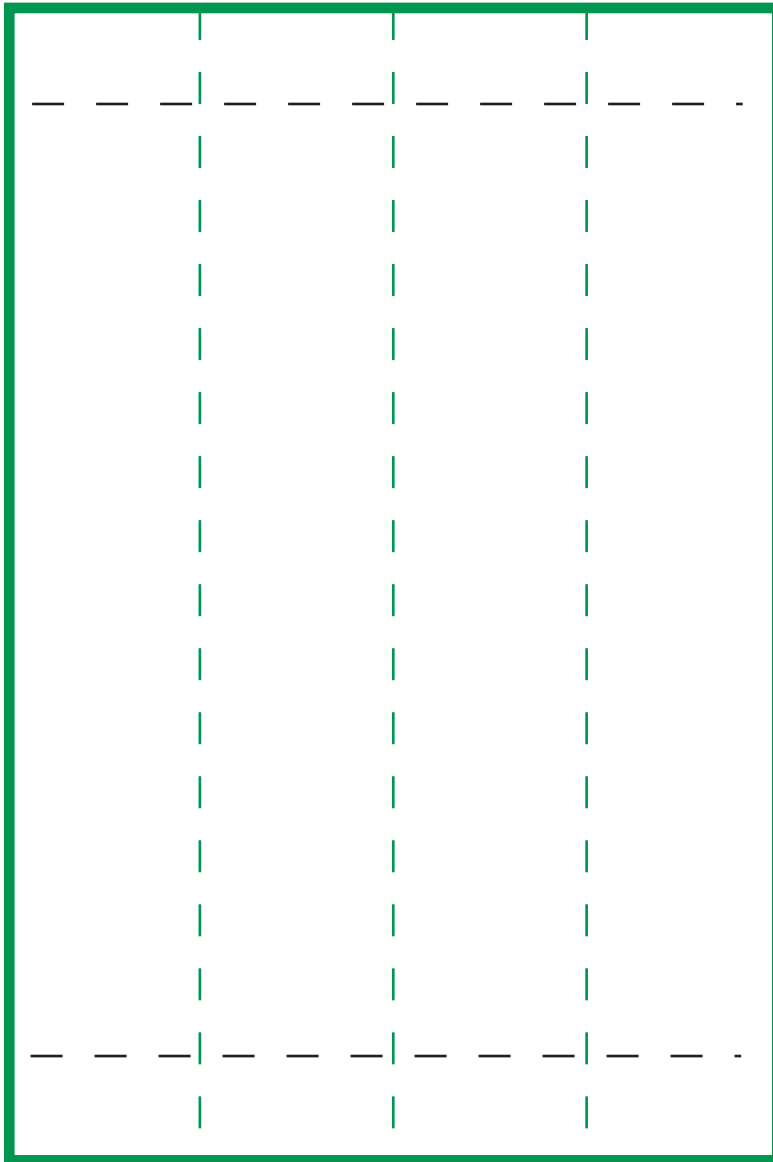
### Exterior Main

- From paper pattern cut out Pieces E, F & G around their outer most edges including the dashed edges.
- Overlap where noted and tape together making one pattern piece.
- Fold fabric in half wrong sides together.
- Cut two at a time around the outer most edges including the dashed line for the seam.

### Lining

- From paper pattern cut out Pieces A, B, C & D around their outer most edges including the dashed edges.
- Overlap where noted and tape together making one pattern piece.
- Fold fabric in half wrong sides together.
- Cut two at a time around the outer most edges including the dashed line for the seam.





### Hanger

- From paper pattern cut out around the outer most edges.
- Cut one from exterior main fabric.
- Fold in half long ways and press to make a crease.
- Open up and fold the short edges in 1/2" to crease.
- Fold each of the raw long edges into the center crease and press.
- Fold back in half so that all marked edges are folded in. and press.